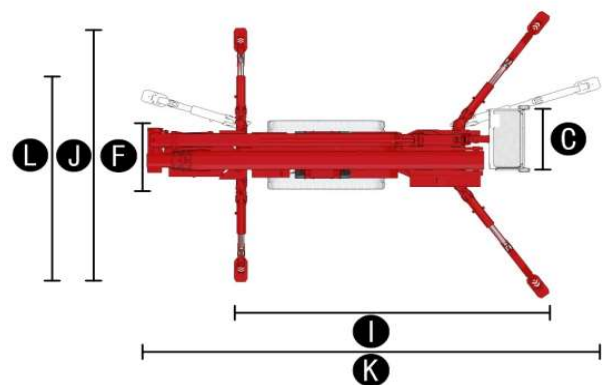


Specifications

LE40GTX

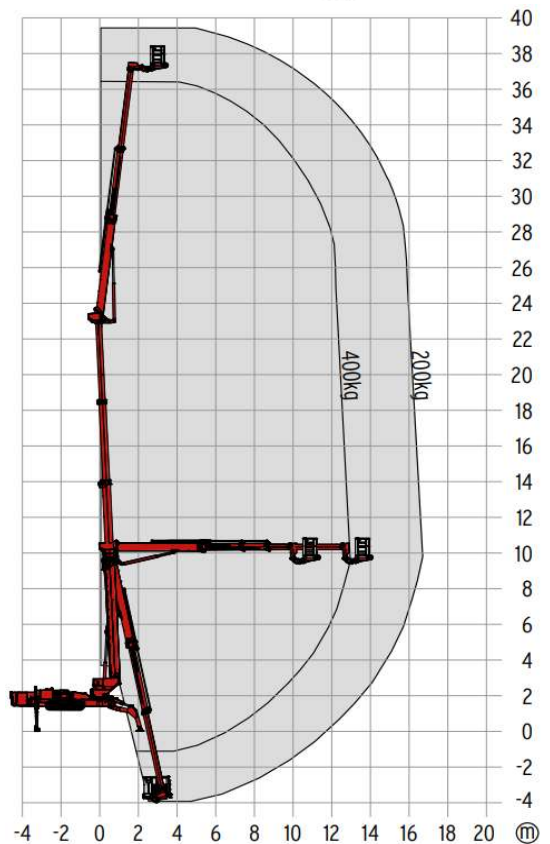
Measurements	Metric	US
Working height with 200kg (441 lbs)	39.50m	129 ft 1 in
Working height with 400kg (882 lbs)	36.50m	119 ft 9 in
Horizontal outreach with 80kg (176 lbs)	16.70m	54 ft 9 in
Horizontal outreach with 200kg (441 lbs)	16.70m	54 ft 9 in
Horizontal outreach with 400kg (882 lbs)	13.00m	42 ft 7 7/8 in
Up and over clearance, max.	22.00m	72 ft 2 in
Platform height (A)	1.10m	3 ft 7 in
Platform length (B)	0.80m	2 ft 8 in
Platform width (C)	1.50m	4 ft 11 in
Length, overall (D)	8.20m	26 ft 11 in
Height, travel position (E)	1.98m	6 ft 6 in
Width, minimal overall width (F)	1.58m	5 ft 3 in
Max. ground clearance (G)	1.19m	47 in
Track (L x W) (H)	2.41m x 0.40m	8ft x 1ft 3 3/8 in
Length outrigger footprint standard (I)	6.75m	22 ft 2 in
Width outrigger footprint standard (J)	5.55m	18 ft 2 1/2 in
Length footprint one side narrow (K)	9.00m	29 ft 6 1/2 in
Width footprint one side narrow (L)	3.90m	12 ft 9 1/2 in
Outrigger plate (L x W)	0.52m x 0.27m	20 1/2 in x 10 1/2 in



Productivity	Metric	US
Basket capacity	400 kg	882 lbs
Movable Jib	-	-
Basket rotation	180°	180°
Turret rotation	450°	450°
Turret rotation, one side narrow	120°	120°
To be jacked up on ground slope of	16.7°/30%	16.7°/30%
Height and width track adjustment	50/32 cm	19 3/4/12 1/2 in
Gradeability max.	16.7°/30 %	16.7°/30 %
Slop angle	15°/27 %	15°/27 %
Travel speed	1.6 km/h	0.9 mph

Weight	Metric	US
Total weight	11,700kg	25,794 lbs
Live load in travelling position	4.8 kN/m ²	100.0 psf
Live load in working position	4.0 kN/m ²	83.5 psf
Max. point load per outrigger plate	75.5 kN	16,861 lbf

Power	Metric	US
Standard power sources (Electric & combustion engine)	1) Diesel: Kubota V 2203-M, (36 kW, 49 hp) 2) Electric motor: 400 V, 15.7 A, 7.5 kW	
Fuel tank capacity Diesel engine	68.0 l	18 gal



Features



Track Chassis

- Powerful track drive with hydraulic braking system
- Precise manoeuvring over sensitive electrohydraulic radio remote control
- Black rubber tracks with specially arranged profile providing optimum grip
- Hydraulically height- and width-adjustable track chassis

Stabilisation

- Fully hydraulic, automatic leveling system with constant outrigger setup monitoring
- Variable stabiliser/outrigger system with one-side narrow setup option

Boom System

- 4-section steel lower telescopic boom on wear-resistant sliding blocks
- Reliable 3-section steel and aluminium upper boom on wear-resistant rollers
- Basket positioning into negative work area up to approx. 4m/12ft below setup level
- Over 200kg/441lbs automatic height cut-off at 36.5m/119ft 9in
- All functions are available from one radio remote control panel
- Electric-proportional radio remote controls with intuitive operator guidance
- Robust, lockable control panel with integrated operation and display function
- Self-levelling platform with electro-hydraulic levelling system
- 180° basket rotation
- Boom rotation via high-performance slew ring, worm gear and hydraulic motor
- Basket changing system

Power Sources

- 400 V electric motor
- 4-cylinder Kubota V 2203-M Diesel engine, silenced (35.9 kW/48.1 hp)
- Start-Stop switch of combustion engine in the basket

Standards Compliance

2006/42/EG-Machinery directive (Harmonised standard EN280:2001 + A2:2009); 2004/108/EG (EMV); 2000/14/EC (Noise emission directive - outdoor)

Productivity, Safety, Quality

- 230 V (EU), 115 V (US) double power outlet in the basket
- Ergonomically shaped basket with eyelets for safety belts and tool tray
- Lockable storage box for radio remote control
- High-quality paint in RAL 3020 (red)
- Electrically regulated emergency control system
- Cables and hoses are safely routed through the boom structure
- Biodegradable hydraulic oil
- Lock valves - hydraulic return valves directly on all hydraulic cylinders
- Relief valves protecting the hydraulic system from too high pressures and hoses
- Hour meter
- Fuzzy control technology

Accessories

- 4 outrigger pads (1090 x 390 x 40 mm/3ft 7in x 1ft 4in x 1½in), PVC, 14.8kg/33lbs
- Track mats (2000 x 1000 x 15 mm/6ft 6in x 3ft 3in x ½in), extra durable rubber
- Safety harness



NATIONWIDEHIRE
BUILDING MOMENTUM

Contact To Hire | 01329 226 868

enquiries@nationwidehire.co.uk

Product specifications are subject to change without notice or obligation. Photographs and drawings in this document are for illustrative purposes only. Refer to the appropriate Operator's Manual for instructions on the proper use of this equipment. Failure to follow the appropriate Operator's Manual when using our equipment or to otherwise act irresponsibly may result in serious injury or death. The only warranty applicable to our equipment is the standard written warranty applicable to the particular product and sale and we make no other warranty, expressed or implied. Products and services listed may be trademarks, service marks or trade-names of Teupen Maschinenbau GmbH and/or its subsidiaries in the U.S.A. and many other countries. "Teupen", "Access redefined" and "LEO Series" are registered Trademarks of Teupen GmbH in the United States of America and many other countries. © 2016 Teupen Maschinenbau GmbH.